

2020 VISION

STEPPING OUT IN FAITH TO REACH THE NEXT GENERATION



● 1947 New 7th Ave. auditorium



● 1891 First building on 7th Ave

● 1943 Pastor Kraft hired



● 1949 Education building
Aptos Groundbreaking 1971 ●



● 1973 Aptos campus opens

● 1975 Childrens Enrichment Center
(CEC) launches
Monschke Hall Opens

◀ OUR 2020 VISION

Complete the original 1971 master plan by providing permanent homes on the Twin Lakes Church campus for school-age children, youth, and college students by the year 2020 — thereby freeing up space for more adult ministry too!

- Elementary-age Children's Building
- Remodel Gym Building for Youth
- College Meeting Space/Coffee House
- Kraft Chapel

• 1981 *Twin Lakes Christian School (TLCS) opens*

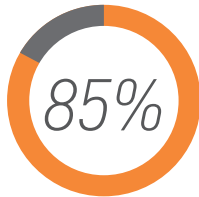
• 2011 *TLCS middle school added*

• 2013 **2020 VISION**
campaign begins

• 2020
*Buildings
completed*

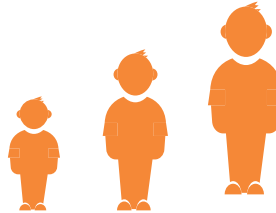
WHY BUILD? ▶

The key to changing our community for Christ: **INFLUENCE YOUTH**



*OF ALL DECISIONS TO FOLLOW CHRIST
ARE MADE BETWEEN THE AGES OF 4-14**

*"BY THE AGE OF 13, ONE'S SPIRITUAL
IDENTITY IS LARGELY SET IN PLACE."
-GEORGE BARNA***



*OF PUBLIC ELEMENTARY SCHOOLS IN
SANTA CRUZ ARE OVERCROWDED,
DISTRICT ESTIMATES 5% GROWTH IN 3 YEARS DUE TO
MINI-BABY BOOM »*

*Dan Brewster, "The 4/14 Window: Child Ministries and Mission Strategy," Children in Crisis: A New Commitment, ed. Phyllis Kilbourn (Monrovia, CA: MARC, 1996)

**George Barna, "Research Shows That Spiritual Maturity Process Should Start at a Young Age," The Barna Group, Nov. 17, 2003 <http://www.barna.org/> [accessed May 7 2013].



THIS IS NOT ABOUT BUILDING A BUILDING, THIS IS ABOUT
BUILDING INTO LIVES.

Garret, Jacob and Jack, TLCS students & youth group members moments after their baptisms



NO MATTER HOW MUCH WE RAISE FOR OUR OWN BUILDING,
THE FIRST FUNDS WILL GO TO THESE PROJECTS.

Little Flock Children's Home in Chennai, India

◀ COMPASSION FIRST

It's our tradition at TLC to include missions in each building campaign; for every building you see on our campus, there's a building on a foreign field.

We'll continue that tradition by helping **Little Flock Children's Home**, a longtime missions partner in India, fund their own children's education community center. This will include classrooms, a computer lab, vocational training rooms, and a clinic.

TLC will also contribute a portion of whatever we raise to one of our local partners, **Second Harvest Food Bank**. Since we normally launch a big food drive in the fall, this year we will set aside a portion of the 2020 VISION funds to this worthy cause.



“TWIN LAKES CHURCH HAS CHANGED MY FAMILY TO ITS CORE.”

Mike & Kayce Wilkinson with their kids Jenny Wilkinson & Jacob Grosdidier

◀ EVERYONE BENEFITS

“Our son began to experiment with drugs and alcohol and became disrespectful... I started looking for a church with a strong youth group... Through Camp Hammer I was led to TLC. That was four years ago.

“Today we can’t keep him away from TLC!! **His reluctance has turned into his passion.** He is on student leadership. He has many friends who he calls his brothers and sisters who all support each other like nothing I’ve ever seen before. **He is seen as a loving Christian on his high school campus** and has encouraged many others to experience the love he found at TLC. He loves the Lord with all his heart and is gearing up to share his love with the world as he goes off to YWAM (Youth With A Mission) when he graduates.

“It was the community of Twin Lakes Church that has been our village that has brought up our child. And not just him. Both my husband and myself have felt the hurt in our hearts melt away as we grow in love with Jesus with each passing day. **The vision of Twin Lakes Church is our vision too** — and we support and pray over every detail. We are excited to be a part of this vision to help the children in our community thrive... our children included!”

-Kayce Wilkinson



“Our children are growing up with a sense of who they are in Christ and what is important in life. Plus, the children’s ministry and TLCS brought us back to church. My husband came to faith in Christ after watching our lives change! Thank you!!”

-The Harn Family

“We are blessed to be at TLCS where the staff are not only teaching strong academics but instilling tools needed to develop a strong Christian foundation. We know without a doubt that they are being embraced and taught through the love of Christ. Their academic and spiritual growth is impressive beyond measure.”

-The Williams Family



EVERYONE BENEFITS



TAKE A LOOK AT HOW NEW BUILDINGS FOR YOUNG PEOPLE IMPACT ALL OF THE MINISTRIES AT TLC



Our jr. high and high school groups meet in adult classrooms in Monschke Hall. Let's move them to permanent and more spacious quarters in the gym!



Many of our TLCS elementary classes are held in aging portables. Most of our church children's ministry meets in temporary space in the gym. These kids need a permanent home.



The TLC college group meets in a converted garage and Monschke Hall. Let's give them their own building near Cabrillo College.

600



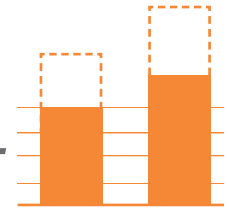
CHILDREN & YOUTH ATTEND TLC EACH WEEK

75



MINISTRIES SHARE SPACE ON CAMPUS CURRENTLY

150+



NEW STUDENTS COULD BE ENROLLED IN TLCS & CEC

1 Move TLC and TLCs kids from portables and gym to permanent classrooms in new building

2 New children's building allows space for jr high & high school to move into the gym

3 TLCs kindergarten classes move to new building and CEC gains 3 classrooms

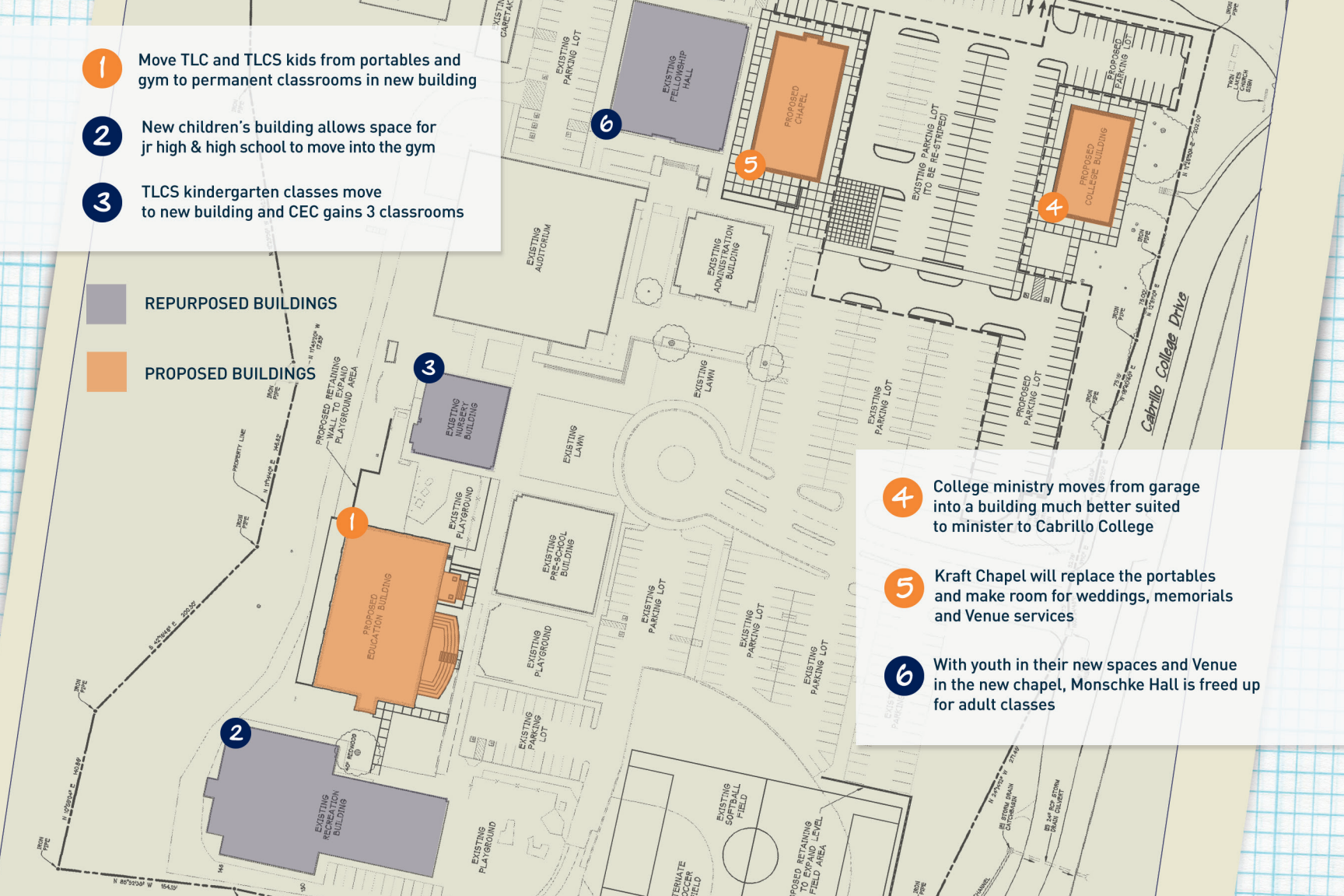
REPURPOSED BUILDINGS

PROPOSED BUILDINGS

4 College ministry moves from garage into a building much better suited to minister to Cabrillo College

5 Kraft Chapel will replace the portables and make room for weddings, memorials and Venue services

6 With youth in their new spaces and Venue in the new chapel, Monschke Hall is freed up for adult classes



PHASE 01 ▶

FAITH BUILDING CAMPAIGN: OCT 2013

BUILDING CONSTRUCTION: 2014 – 2015

CHILDREN'S MINISTRY BUILDING

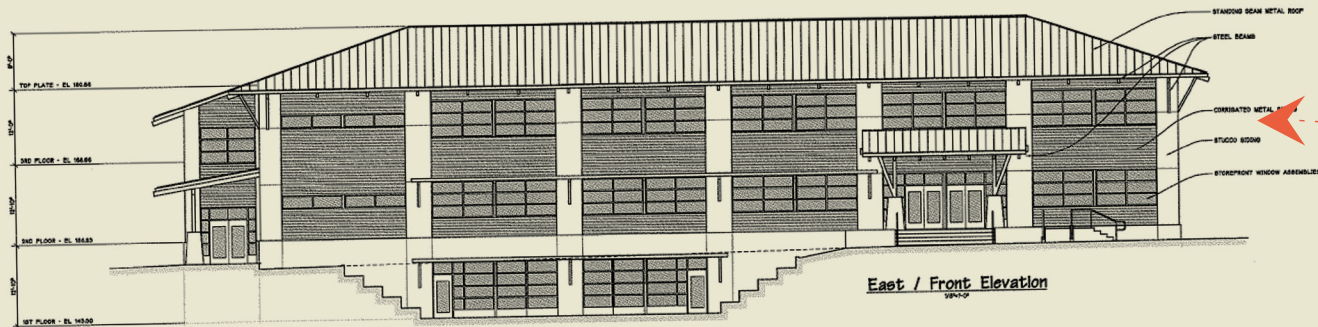
- On current site of sand volleyball courts
- Designed for ministry to elementary-age kids
- Bright, beautiful ministry spaces
- Weekends & weeknights: TLC children's ministries
- Weekday use: Twin Lakes Christian School



this is a
DAY-A-WEEK
ministry center

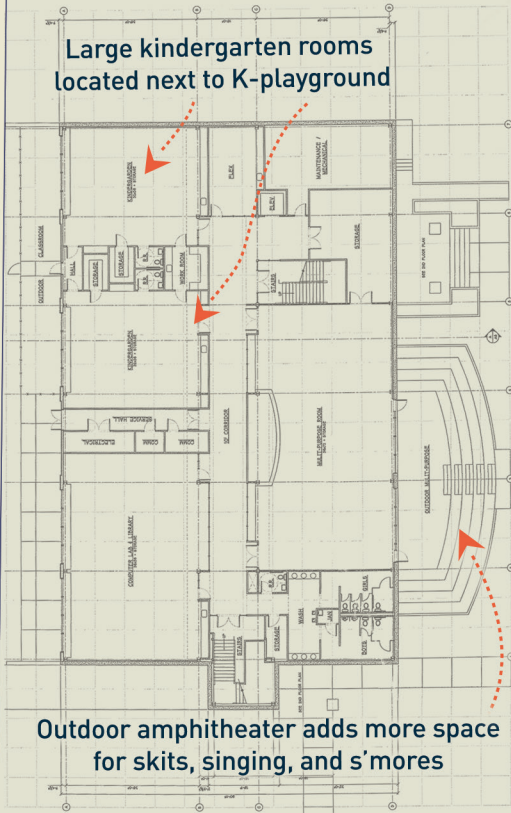
We are not just building for Sunday. We will immediately fill the building with children's ministries during our weekend worship services. In addition, the new building will allow us to expand our weekday school, and the additional space in Monschke Hall will allow us to serve the ministries of TLC and host more community groups.

We also pray that our worship service attendance will grow because the school will attract more unchurched families.



1st floor

Large kindergarten rooms located next to K-playground

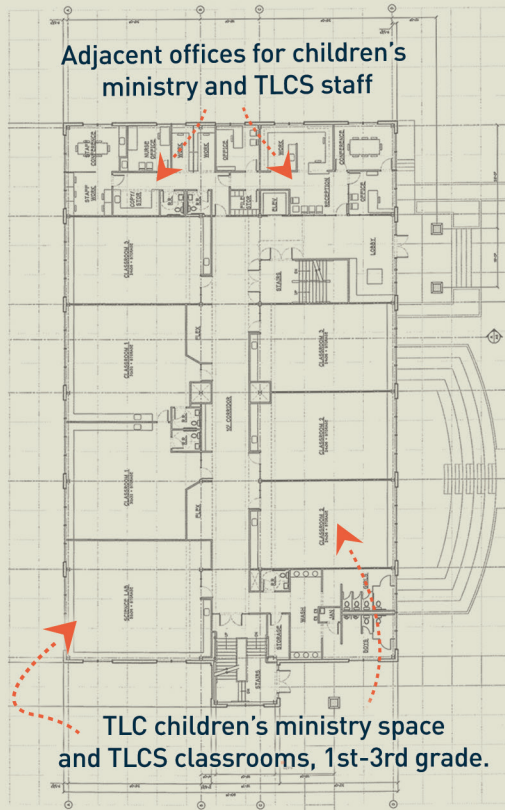


Outdoor amphitheater adds more space for skits, singing, and s'mores

+ Computer lab and library for
TLCS and TLC children's ministry

2nd floor

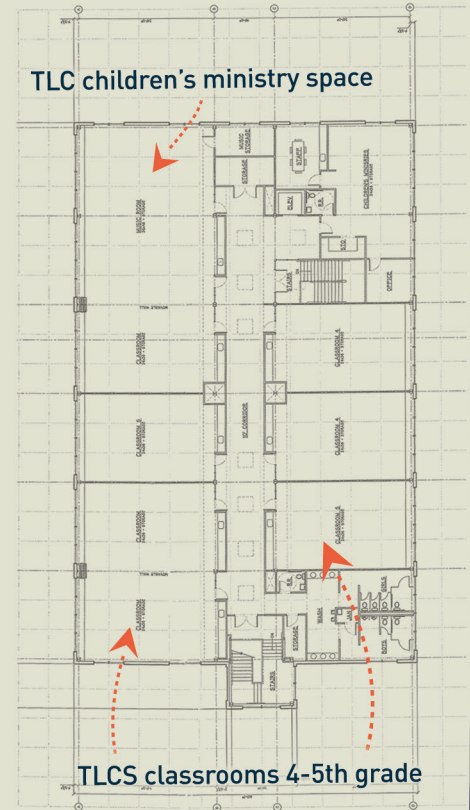
Adjacent offices for children's ministry and TLCS staff



TLC children's ministry space and TLCS classrooms, 1st-3rd grade.

3rd floor

TLC children's ministry space



TLCS classrooms 4-5th grade

+ Moveable "air walls"
add flexibility
to room size and usage

New Children's Building Floorplans

PHASE 02

FAITH BUILDING CAMPAIGN: 2018

BUILDING CONSTRUCTION: 2019-2020

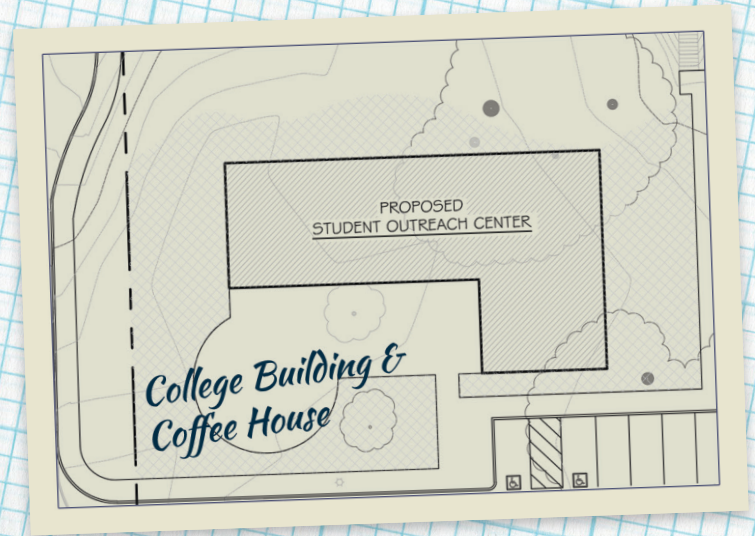
COLLEGE BUILDING/COFFEE HOUSE

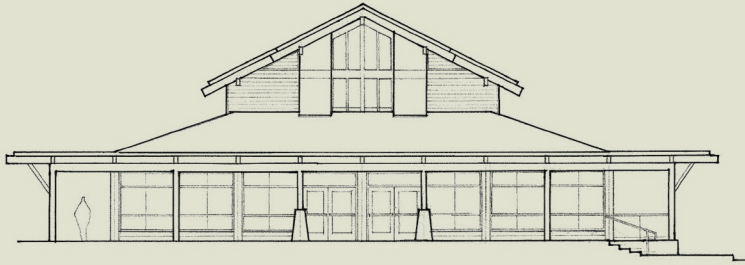
- Near entrance of church near Cabrillo College
- Coffee house, meeting place for college students

KRAFT CHAPEL

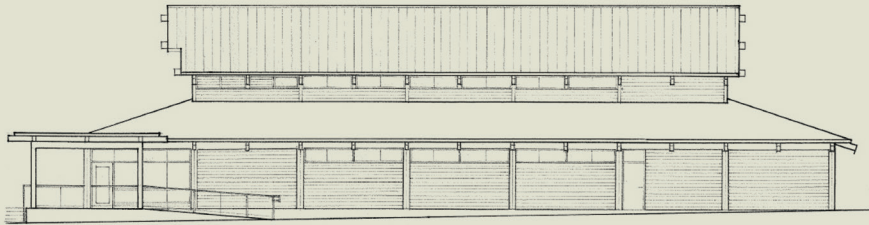
- On current site of portable classrooms
- 250-seat chapel for venue services, large classes, weddings, memorials, mid-week programs, etc.

TEACH THESE THINGS TO YOUR CHILDREN AND TO THEIR CHILDREN AFTER THEM... DEUTERONOMY 4:9

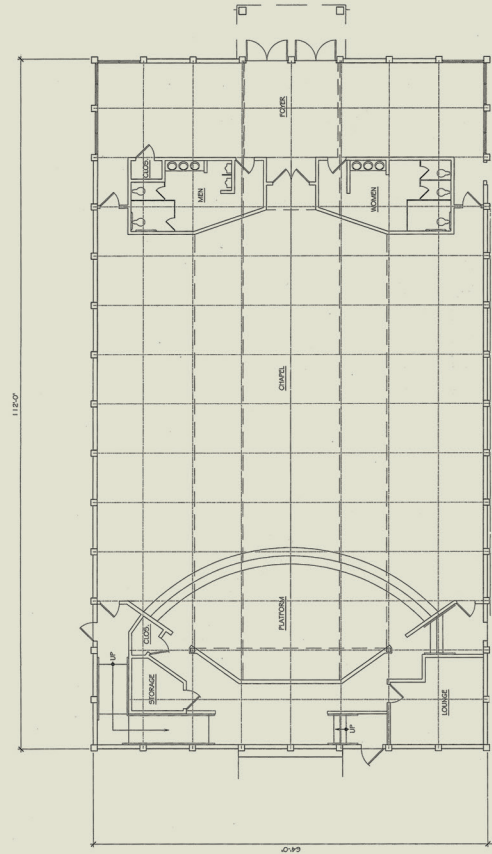




SOUTH ELEVATION
SCALE: 1/16" = 1'-0"



EAST ELEVATION
SCALE: 1/16" = 1'-0"



Kraft Chapel Elevation & Floorplan

F.A.Q. ▶

Frequently Asked Questions

What is our current financial situation?

Twin Lakes Church has a balanced budget, no debt or mortgage, and giving has grown– this past year we experienced our highest giving ever.

How will we pay for the new building?

Our giving campaign **begins October 2013** and **concludes six weeks later** as we collect pledges **the weekend before Thanksgiving**. The following weekend we'll announce our totals! Our goal is to pay for the building entirely by gifts from the congregation over the next four years.

What will the new building be like?

It will be three stories high. The bottom floor will be below the entry level, so as you stand on the sidewalk in front of the building, you will only see two stories of height. It will contain large multi-purpose rooms for children's ministry and TLCS chapels; dedicated spaces for elementary-age church programs as well as school classrooms; rooms for music, art, science and computer labs; a library; and an outdoor amphitheater that flows into an entrance on the first floor. It will also have modern security and media capabilities

What if we need another kind of building in the future?

The new building offers **flexibility**. None of the interior walls are bearing, so these spaces can be altered as our church needs change.

Why do we need a new children's building?

It offers **identity, opportunity, security, and legacy**. The three-story children's building will give the kid's ministries an **identity**, a place to call their own, instead of temporary, shared spaces. It creates **opportunity** — for growing our children's ministries, our school, and the rest of the church too, since other ministries will have room to expand. With all of the elementary-age kids in one central facility, it will provide better **security** than our current situation. And we have the chance to leave a **legacy** to future generations.

Why build the children's building first?

The portable classrooms currently sit on the future location of our chapel, so the children's building must be built before the chapel construction can start. And both the college building and chapel will require extending underground utilities, reconfiguring parking spaces, and repaving, all on the same side of the church parking lot, so it makes financial sense to do those projects together.

How much will Phase 1 cost?

According to our most recent estimates from Bogard Construction, the Phase 1 cost will be \$10.75 million. The building itself will cost \$9 million at \$237 per square foot. The soft costs (plan approval, building permits, and so forth for all three buildings) and the Compassion First components are \$1.75 million, for a total Phase 1 cost of \$10.75 million.

When will we build it?

If giving and county permits allow, we hope to begin construction in late 2014 or early 2015. Construction is expected to take approximately 14 months.

What about Phase 2, the chapel and college building?

We're still very early in the design phase, so precise cost estimates are premature. However, Phase 2 will cost much less than Phase 1, since these are far simpler and smaller buildings.

We hope to build them following a second capital campaign in 2018, so the whole campus is **finished by 2020** (unless we raise enough to complete the whole plan immediately)!

What if we don't get all the funds we're asking for?

We are relying on God to help direct us through the pledge campaign. If it becomes plain through this process that we need to do so, we reserve the option to reduce the scope of the project.

How can we make this happen?

We can't! Only God can. But as we have a "whatever it takes" attitude for His kingdom, He can work through all of us to do miracles... and He already has! In 1971, God enabled the then 1500 members of TLC to raise \$1.6 million to build our first 3 buildings — an amount equal to \$9.3 million today! God is not limited by the economy, statistical probabilities, or daunting challenges.

How can I give?

All at once or regularly throughout our 4 year pledge drive. We can also arrange for automatic deductions, credit card, stocks, and other readily convertible assets.

Will this be above my usual giving to the church?

Yes, please! Life goes on at the church during construction, with all our normal ministries continuing to function and grow. We want to have strong programs to move into their new homes in these future facilities.

What benefits will adults get from children's and youth buildings?

There are so many blessings, but one of the biggest: Monschke Hall will be dedicated to adult ed once more. Currently there are just two rooms available each weekend for adult Sunday School. After 2020 Vision is completed, we'll have all 7 Monschke rooms available in each service, so we'll go from 2 to 21 possible adult classes each weekend! A vast adult class track is possible!



1893 – Earliest known photo of the Twin Lakes Congregation

◀ IMPORTANT DATES

October 12/13 — 2020 VISION CAMPAIGN BEGINS

Vision meetings after Saturday 6pm and Sunday 10:45am services

November 16/17

Vision meetings after Saturday 6pm and Sunday 10:45am services

November 23/24 — COMMITMENT WEEKEND

Bring your complete pledge card and any one-time contributions.

November 30/December 1 — CELEBRATION WEEKEND

We'll rejoice in what God has given!

*...NOW TO HIM WHO IS ABLE TO DO IMMEASURABLY MORE THAN ALL WE ASK OR
IMAGINE, ACCORDING TO HIS POWER THAT IS AT WORK WITHIN US... EPHESIANS 3:20*



WWW.TLC.ORG